



Mardan
Mirboo North
Landcare
Group

Mardan-Mirboo North Landcare Group

About the Mardan-Mirboo North Landcare Group (MMNLG)

The MMNLG is part of the South Gippsland Landcare Network and is based around the localities of Mirboo North, Mirboo and Mardan in South Gippsland. The area covered by our group nestles in the foothills of the Strzelecki Ranges between the East and West branches of the Tarwin River, encompassing the important Berrys Creek catchment that feeds into the West Branch of the Tarwin. Our area covers nearly 20,000 hectares of mainly pastoral land, with some areas of hardwood plantation. It includes the Lyrebird Forest Walk, Baths Rd Reserve and the western extent of the Grand Ridge Rail Trail (see map).

Our current and planned work focuses on tree planting, fencing to support regeneration of native flora and reduce erosion impact of livestock, weed and feral pest control, maintenance of reserves within our catchment (including the work of the Friends of Baths Rd Reserve), wetlands development and waterway protection, and the development of wildlife corridors. Within an area mainly devoted to pastoral industry, we have a strong focus on regenerative farming and protection of soil cover.

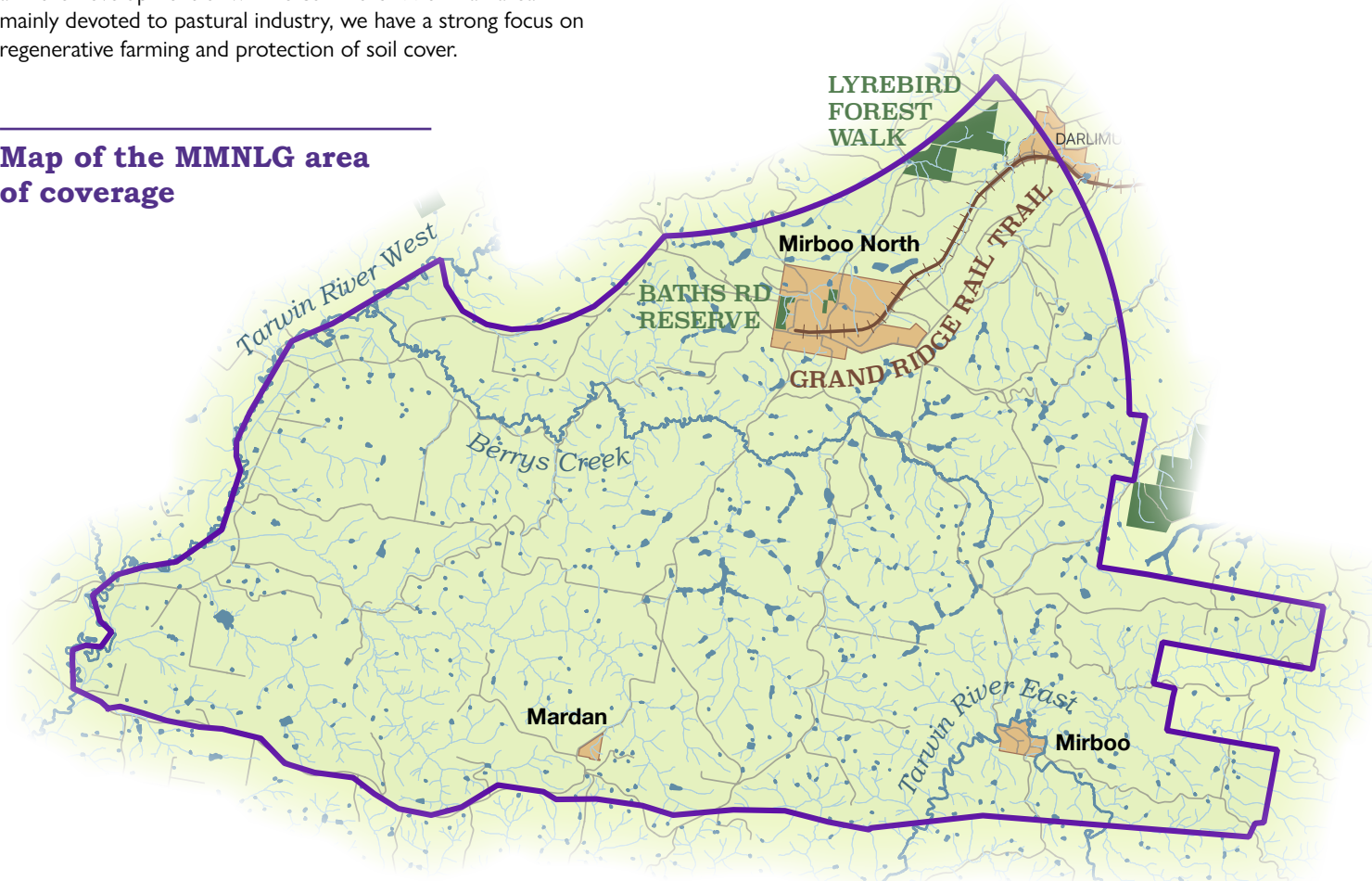
MMNLG welcomes new members

Our group welcomes new members, especially those with a passion for protecting and developing our native flora and fauna and supporting sustainable farming. Anyone interested in joining can do so by completing the membership application form on our website and paying the annual membership fee of \$33.00. All memberships are household memberships, linked to a property within the MMNLG area of coverage (see the map below). Visit <https://www.mmnlndcare.net.au/join.html> to check whether your address is in our area.

The membership form can be accessed at:
<https://www.mmnlndcare.net.au/apply.html>. Join now and get involved.

If you have any questions or would like more information, you can get in touch through our website (<https://www.mmnlndcare.net.au/contact.html>) or email us at mmnlndcare@hotmail.com.

Map of the MMNLG area of coverage





What we do

Some of our group's activities are outlined below. You can visit <https://www.mmnlc.net.au/activities.html> to get the latest information about our activities and projects and find out how to get involved.



Friends of Baths Rd Reserve

The Friends of Baths Road Reserve is auspiced by MMNLG and, with the support of the South Gippsland Shire Council, works to preserve and rejuvenate this important area of remnant wet forest adjacent to Baromi Park in Mirboo North. The Friends group has regular working bees held on the last Sunday of each month to work on areas within the reserve, including clearing weed species. The Friends group recently secured grant funding to plant native groundcover to assist with weed control. The working bees are also lively social occasions, featuring all-important refreshments at the end of each session.



Controlling Erosion

MMNLG works to address erosion and landslip issues in priority locations within our catchment. Grant funding supports the effort of landowners and group members to tackle the devastating impact of erosion on soil quality and sustainable agriculture. Revegetation work is stabilising land where erosion has occurred and improving local biodiversity through the planting of native species.

Working with the South Gippsland Landcare Network, MMNLG conducts community field days to visit landslip and erosion sites where project work is happening, and runs workshops to share information and resources on land management.



Reversing Habitat Loss

Most of the MMNLG area is pastoral land, with only small patches of remnant native vegetation remaining. With the support of landowners, MMNLG has sought to restore native habitat in key areas through revegetation efforts. Since 2002, MMNLG has planted more than 20,000 trees to revegetate cleared land with native flora appropriate to the local ecology. This work continues today and is a core part of the group's efforts to preserve and improve the environmental value of our local area.



Building Biolinks

MMNLG is capitalising on work done in 2021 and 2022 by the Preserve our Forests Mirboo North and District Steering Committee, the Victorian Environmental Assessment Council and the South Gippsland Landcare Network to target priority locations for building biolinks and connectivity for at-risk native fauna. This work includes linking ongoing revegetation efforts with existing remnant vegetation to create a wildlife corridor in the southern part of our catchment area.

More information

To learn more about Landcare in the South Gippsland region, visit the South Gippsland Landcare Network at: <https://www.sglc.net.au>.